



# The Lakeland Trial

Lower Lorton, Cumbria

Saturday 9<sup>th</sup> November 2024



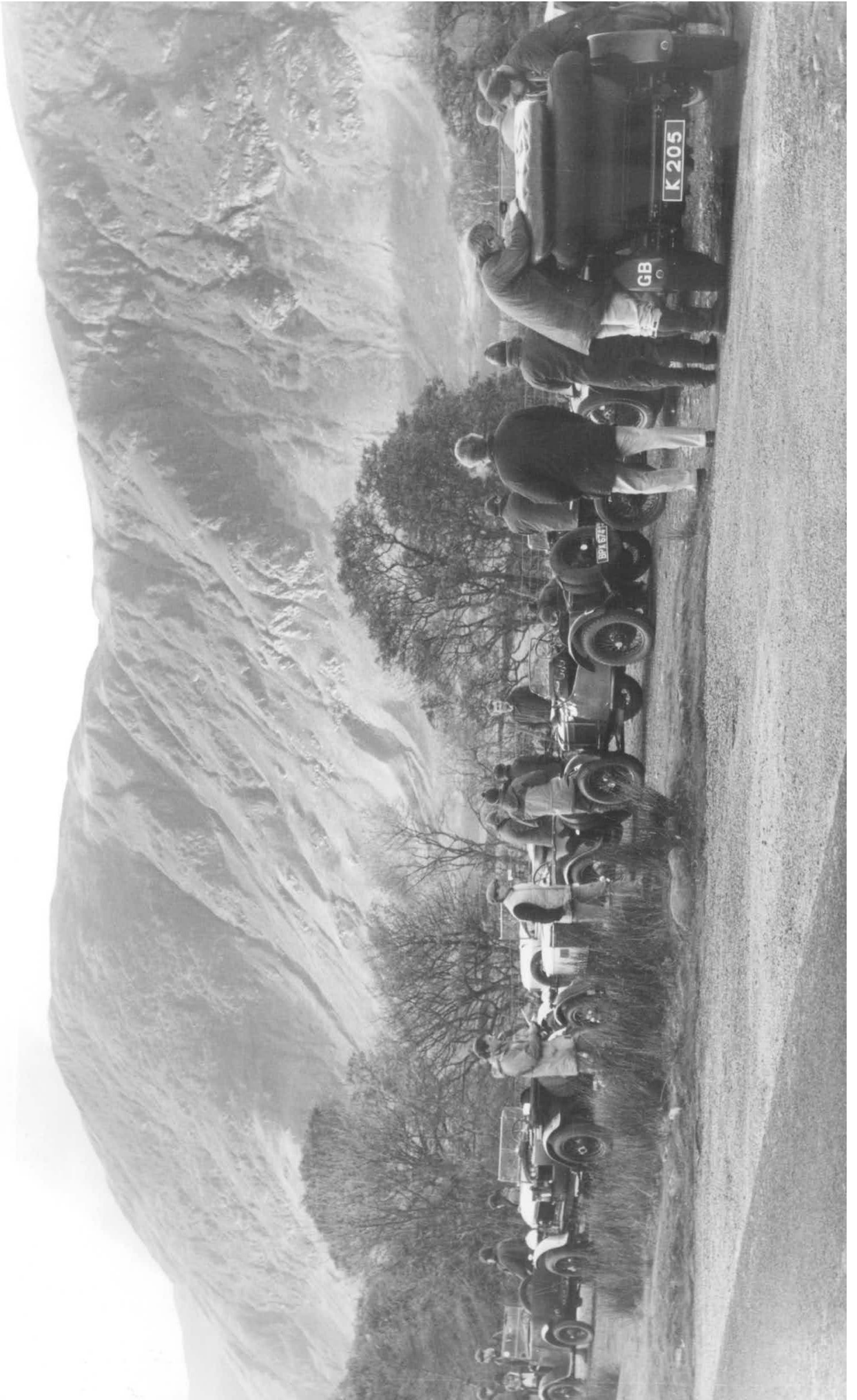
Photo: M Griffin

## Spectator Information

The Vintage Sports-Car Club is proud to be associated with our Principal Associates and Partners

Bonhams | Cars **HAGERTY** **The Automobile**







THE VINTAGE SPORTS-CAR CLUB

**The Lakeland Trial**

Saturday 9<sup>th</sup> November 2024

Motorsport UK Permit Number - 200329

**SPECTATOR INFORMATION**

Held under the General Regulations of Motorsport UK (incorporating the provisions of the International Sporting Code of the FIA) and the Supplementary Regulations

**SPECTATOR HILL**

Please remember Trials are not really spectator events. Many hills are unsuitable for public access and only the hill listed below is available for public viewing. If visiting the hill please remember to park responsibly, respect the landowner's property and follow any instructions given by a Marshal.

DRUMHOUSE	LOCATION
<p><b>Drumhouse, Honister Slate Mine</b></p> <p>Open 0900hrs to 1545hrs.</p> <p>Parking, toilets, &amp; refreshments are all available at Honister Slate Mine at the top of Honister Pass. Note there is a parking charge.</p> <p>The start of the hill is a short walk from the car park.</p> <p>Please note that the track is very steep and rough especially at the hairpin bends.</p>	<p>Entry map reference OS Sheet 89 224136</p> <p><i>Venue used since the first Lakeland Trial.</i></p>

**THERE ARE NO OTHER DESIGNATED SPECTATOR HILLS ON THE LAKELAND TRIAL**

**WHAT IS A CAR TRIAL?**

In the early days of the motor car trialling was the main form of motor sport in the United Kingdom. There was only one racing circuit in the country, Brooklands, and rallying had not started. These climbs up rocky, muddy hills were extremely popular in their day and as with all forms of motor sport helped in the development of the car.

A Car Trial is an untimed form of motor sport, where competitors attempt to climb a number of set routes up steep, rough and muddy hills. The route up each hill is known as a "Section". Each Competitor will receive a score between 0 and 25 for each Section depending on how far they travel up the hill. All the scores for each Section are combined at the end of the event, and the Competitor with the highest combined score wins.

Competitors must carry passengers, who are called 'Bouncers'. The role of the Bouncer is to navigate the driver between sections on the forest roads and public highway, and bounce within the confines of the car when they are on a Section. Bouncing can give the car more grip, thus helping it to travel further up the hill and score more points.

You will notice Marshals standing alongside the Sections. Marshals observe the score for each car, whether it hits a marker, and writes this onto the Competitors' Scorecard. The Marshals are also responsible for ensuring the event runs safely so please do as they ask. Trialling is a fun form of motor sport, very social and hugely successful within the VSCC. The Club runs a number of Car Trials each year throughout the UK, with the Lakeland Trial having taken place in this area since 1969.

## Entry List

No	Class	Reserve	Driver	Car	ccS	RegNo	Year	
<b>Class 1a. Standard. Short wheelbase cars (less than 8' 6" &amp; HRGs) and cars with solid rear axles</b>								
100	1a		Daniell (George) Mr G.	AUSTIN 7 CHUMMY	750	RU5002	1927	Std
101	1a		Gillett (Charles) C.R.E.	BUGATTI BRESCIA	1496	BF 4104	1923	Std
102	1a		Rushton (David) D.J.	MG M TYPE	847	PJ 7970	1932	Std
103	1a		Cracraft-Eley (William) Mr C.W.A.	AUSTIN 7 CHUMMY	747	MT 1724	1929	tba
105	1a	R11	Emson (James) J.	SINGER LE MANS	972	JB 5133	1934	tba
106	1a		Power (Michael) M.R.P.	GN ANZANI	1496	WX 6677	1925	Std
107	1a		Marsh (Paula) Mrs P.E.	BUGATTI T23	1500	SV 7851	1919	tba
108	1a		Holmes (Paul) P.	AUSTIN 7 CHUMMY	747	VF 3888	1928	Std
109	1a		Hunt (Theodore) T.M.B.	TROJAN Utility	1488	MK6812	1925	Std
110	1a		Robertson (Ian)	TRIUMPH 1934 Southern Cross	1087	RV 5287	1934	Std
<b>Class 1b. Clubmans. Short wheelbase cars (less than 8' 6" &amp; HRGs) and cars with solid rear axles</b>								
115	1b		Owen (Sarah) S.	AUSTIN 7 ULSTER REPLICA	747	BF5908	1930	Mod
116	1b		Maitland (Antony) A.A.A.	AUSTIN 7	750	OG 5815	1930	Spl
117	1b		Read (Andrew) A.J.W.	RILEY 9 TOURER SPECIAL	1087	MY 5481	1930	Spl
118	1b		Buck (Emilia) Miss E.J.C.	MORRIS MINOR	892	BS9400	1930	Spl
119	1b		Hindle (Lucy) Miss L.	AUSTIN 7 SPORTS	747	AVY22	1935	
120	1b		Jeavons (Vienna) Miss V.F.	AUSTIN ULSTER	747	VL 8550	1932	Mod
121	1b		Dobinson (Keith) K.	AUSTIN 7	747	OG 1189	1930	Mod
122	1b		Hoskins (Harry) H.M.	AUSTIN 7 TOURER	747	GH 6536	1929/30	Mod
123	1b		Blake (Sarah) Miss S.E.	AUSTIN VAT 69	1200	YD 3815	1930	Spl
124	1b		Moore (Matthew) M.R.	AUSTIN 7 CHUMMY	696	SV4474	1929	Std
125	1b		Sellers (Grant) G.W.M.	AUSTIN 7	747	COG 968	1936	Spl
126	1b		Matthews (Richard) R.I.	SINGER JUNIOR	747	HU 9833	1927/32	Spl
127	1b		Hindle (Charlie) C.R.	AUSTIN 7 SPORTS	747	HSU 310	1934	Spl
128	1b		Hadfield (Andrew) A.J.	SINGER JUNIOR	848	VP 7894	1929/30	Spl
129	1b		Williams (Rachael) Dr R.	AUSTIN 7	747	BF 5206	1930	Spl
130	1b		Carlton-Walker (Rachael) Miss R.T.	AUSTIN 7 ULSTER REPLICA	750	RT 7470	1930	
131	1b		Chatto (Derek) D.V.C.	MG M Type	847	MG 1930	1929/30	Mod
132	1b		Brown (Derek) D.J.	AUSTIN 7	750	HY 1630	1931	Spl
133	1b		Richards (Gerry) G.	MG M TYPE	847	GC7705	1930	Spl
134	1b		Jordan (Alex) A.N.F.	AUSTIN 7	750	SV 8688	1928	
135	1b		Marsh (William) W.	AUSTIN 7	747	UL 4264	1930	Mod
137	1b		Sellers (William) Dr W.F.S.	SALMSON AL	1086	BF 8761	1923	
138	1b		Mycok (Kraig) K.T.	AUSTIN 7 ULSTER	858	SV 5698	1930	Mod
139	1b	R12	Gabbatiss (Pete) P.	AJS 9HP	1018	SV 8249	1929	tba
140	1b		Bruce (Aleck)	AUSTIN 7 CHUMMY	747	UK 6181	1928	Std
141	1b		Cannings (Graham) G.	RILEY 9	1100	SV 6484	1930	Spl
142	1b		Baxter (Mary) M.L.K.	AUSTIN ULSTER REP	750	BF6188	1930	Mod
143	1b		Scholey (George) G.	AUSTIN 7 ULSTER REPLICA	747	XVV375	1929/31	Mod
144	1b		Bond (Jack) J.S.	AUSTIN 7 CHUMMY	747	VR 8046	1930	
145	1b		Craven (Matthew) M.J.	AUSTIN 7	747	YVL 916	1935	Spl
146	1b		Houlgate (Richard) C.R.J.	AUSTIN 7	747	RX 2937	1930	Spl
147	1b		Agnew (David) D.	AUSTIN 7	747	BF 8791	1928	Spl
148	1b		Craven (Andrew) A.T.	AUSTIN 7 SPECIAL	747	FV 4763	1934	Spl
149	1b		Welch (Sebastian) R.S.	AUSTIN 7 CHUMMY	747	PN 6583	1930	Mod
150	1b		Francis (Ian) Mr I.W.F.	AUSTIN 7 ULSTER REPLICA	747	BF9643	1928/29	Mod
151	1b		Brown (Robert) R.H.	AMILCAR CGSS	2986	UY 4342	1926/30	Spl
152	1b		Rutland-Tucker (Elliot) E.R.T.	AUSTIN 7 ULSTER REPLICA	747	GF 2638	1930	Mod
153	1b		Isherwood (Andrew) A.	AUSTIN 7	750	SB3894	1930	Mod
154	1b		Mellors (Ben) B.J.	PEUGEOT 190S/HARLEY DAVIDSON	1200	BF 4269	1929/30	Spl
155	1b		Hughes (Noel) N.T.	AUSTIN 7 ULSTER	747	SV 7627	1930	Mod
156	1b		McWilliam (Agnes) Miss A.	AUSTIN 7 ULSTER REPLICA	747	YSJ 217	1932/34	Spl
157	1b		Storer (Andy) A.R.	AUSTIN 7	770	OX 8346	1928	Spl
158	1b		White (Gaynor) Mrs G.	AUSTIN 7 SPECIAL	747	KGK 99	1929	Spl
159	1b		Thornton (Tom) T.	G N PAPHILLION	5250	BF 9868	1922/28	Spl
160	1b		Hunt (Martin) The Hon M.J.	AUSTIN 7 ULSTER REPLICA	747 S	FV 1322	1930	Mod
161	1b		Wiltshire (Duncan) D.C.	AUSTIN 7 CHUMMY	747	BF 5308	1930	Mod
162	1b		Quartermaine (Jamie) J.A.	AUSTIN 7 GORDON ENGLAND	795	WH 587	1928	Mod
163	1b	R14	Hall (Anthony) A.W.J.	WOLSELEY 11/22	1267	BF 8901	1925	Spl
164	1b		Longhurst (Philip) P.C.	AUSTIN 7 ULSTER REPLICA	747	PO 8143	1933	Mod
165	1b		Fox (Andrew) A.G.	AUSTIN 7 SPECIAL	747	BPW 537	1937	Spl
166	1b		Holmes (Mick) Mr m.	AUSTIN 7	747	UYJ 381	1936	Spl
167	1b		Derrick (Richard) Mr R.B.	AUSTIN 7 CHUMMY	747	DS8713	1930	Mod
168	1b		Hindle (Julian) J.C.	MG J2	746 S	WXS 656	1933	Spl

169	1b		Mycock (Hannah) Miss H.	AUSTIN 7	747	TY 7519	1930	Mod
170	1b		Webb (Ian) I.D.	AUSTIN ULSTER REPLICA	747	VC 9452	1930	Mod
171	1b		Groves (Mark) M.	SALMSON GN	1100	BF 8438	1919/21	Spl
172	1b		Rolfe (David) D.R.	MG M TYPE	1087	VU 7908	1930	Spl
173	1b		Mackinnon (Jock) J.C.W.	RILEY 9 2STR	1087	GN 8166	1930/37	Spl
174	1b		Painter (James) J.F.	AUSTIN 7 ULSTER REPLICA	750	NSU 852	1930	Mod
175	1b		Johnson (Angus) A.M.	AUSTIN 7 ULSTER REPLICA	747	GC 2799	1930	Mod
176	1b		Parkinson (Philip) P.	AUSTIN SEVEN AE TOURER	747	DR7354	1930	Std
177	1b		Weatherall (Guy) R.C.G.	AUSTIN 7 CHUMMY	747	OT 9271	1928/30	Mod
178	1b		Craven (Benjamin) B.	AUSTIN 7	747	BTJ 600	1937	Spl
179	1b		Leigh (David) D.L.	FRAZER NASH INTERCEPTOR	1496	TF 4096	1930	Std
<b>Class 1c. Experts. Short wheelbase cars (less than 8' 6" &amp; HRGs) and cars with solid rear axles</b>								
180	1c		Batty (Peter) Mr P.J.	FORD T	3300	BF 7838	1929	Spl
181	1c		Quilter (Martyn) M.	SINGER JUNIOR SPECIAL	1087	BF 7046	1930	Spl
182	1c		Johnson (Andy) M.A.	BUGATTI T13	1498	DL 4853	1924	Mod
183	1c		Price (Matt) M.E.	FORD MODEL A SPECIAL	3300	BF 8349	1930	Spl
184	1c		Ireland (Toby) T.W.	RILEY 9 SPECIAL	3300	Bf5806	1929	Spl
186	1c		Price (Simon) S.E.	FORD MODEL A SPECIAL	3300	BF 4957	1930	Spl
187	1c		McVicker (William) W.D.	AUSTIN 7 CHUMMY	747	PH 2185	1927/32	Mod
188	1c		Waite (Fred) F.	AUSTIN SEVEN CAMBRIDGE	750	CCD 428	1935	Spl
189	1c		Bingham (Dennis) D.	RILEY 12/4 SPECIAL	1496	DHX 882	1936	Spl
190	1c		Mellor (Jonathan) W.J.	AUSTIN 7	747	SV 5877	1930	Mod
191	1c		Skelton (Sarah) Miss S.	AUSTIN 7 ULSTER (COPY)	747	AZ 6079	1930	Mod
192	1c		Golightly (David) D.K.	FORD MODEL T	3300	BF 6461	1927	Spl
193	1c		Blake (Tom) T	AUSTIN 7 ULSTER REPLICA	747	BF8724	1929	Spl
194	1c		Rich (Stewart) S.	AUSTIN 7	747	SV 6155	1930	Spl
195	1c		Harrison (Jolyon) J.L.	FORD A SPECIAL	3200	SL 9782	1930	Spl
196	1c		Arkell (Stephen) S.	SINGER JUNIOR	848	VP 6379	1929/30	Spl
197	1c		Skelton (Donald) D.	AUSTIN 7 SPORTS	750	WFO 423	1930	Spl
<b>Class 2a. Standard cars. Long wheelbase cars (8' 6" and over). ALL cars must have an operational differential</b>								
200	2a		Stephens (Sam) S.W.	FORD MODEL A	3300	DS 7543	1930	Std
201	2a		McRobert (David) D.	FORD MODEL A PHAETON	3285	SV7861	1928	Std
202	2a		Wiseman (John) J.C.	FORD MODEL A	3300	NRV505H	1930	Std
203	2a		Henderson (Michael) M.J.	VAUXHALL 30-98	4500	DK 1045	1917	Std
204	2a		Boulton (Dominic) Mr D.	FORD MODEL A PHAETON	3286	BF 6272A	1928	tba
205	2a		Cawley (Wilfred) W.A.F.	FORD MODEL A	3300	510 UXN	1930	Std
206	2a		Harvey (Jack) Mr J.W.H.	FORD MODEL A PHAETON	3300	WSU 325	1930	Std
207	2a		Crook (Christopher) C.R.A.	FORD MODEL A	3285	BF5664	1930	Std
208	2a		Bayliss (Ben) B.	FORD MODEL A	3300	DS 8852	1928	
209	2a		Garness (Roger) R.L.G.	FORD MODEL A PHAETON	3285	347YUM	1928	Std
<b>Class 2b. Modified and Special cars. Long wheelbase cars (8' 6" and over). ALL cars must have an operational differential</b>								
210	2b		White (Joanne) Miss J.L.	RILEY 12/4 SPECIAL	1496	PSY 796	1933	Spl
211	2b		New (Michael) M.R.	MORRIS OXFORD SPECIAL	1802	BS9708	1928	Spl
212	2b		Frankcom (Robert) R.C.	FORD MODEL A	3300	BF 6612	1930	Spl
213	2b		Whitaker (Benjamin) B.A.	FORD MODEL A	3285	BF5251	1929	Mod
214	2b		Hodgkinson (James) J.E.S.	FORD MODEL A	3300	DS 7898	1929	Mod
215	2b		Baxter (James) J.S.	CHRYSLER 60	2940	BF7606	1927	tba
216	2b		Wright (Andrew) A.	CHRYSLER 75	4078	RU 9935	1929	Spl
217	2b		Miller (Jonathan) J.P.C.	CHRYSLER 66 SPORTS	3582	FM 6024	1930	Mod
218	2b		Hall (John) Mr	SINGER Sports	3300	WN 8515	1928/34	Spl
219	2b		Garland (Elysia) E.M.T.	LEA-FRANCIS 12/40 2 STR	1496 S	EE 9190	1929	Spl
220	2b		Bond (David) D.J.	MORRIS COWLEY 2 STR	1550	RW 4974	1926	Mod
221	2b		Jeavons (Paul) P.R.	VAUXHALL 30-98 TOURER	4500	UX 2952	1924	Mod
222	2b		Stollery (Joseph) J.A.	RILEY 9 Mk3	3300	UL7459	1929/30	Spl
223	2b		Irving (William) W.G.	ALVIS 12/50	1645	GK 4031	1930	Spl
224	2b		Baxter (Richard) R.S.	CHRYSLER 75	4078	AGX 107	1928	Spl
225	2b		Cawley (Bertie) Mx A.S.H.	FORD MODEL A	3300	IA 7667	1928	Mod
226	2b		Hennessy (Russell) R.J.	MORRIS COWLEY TOURER	1802	AX5184	1923	Spl
227	2b		Bowyer (Charlotte) Miss C.	FORD MODEL A	3300	ANZ2917	1930	Spl
228	2b		Saxl (David) D.	RILEY 12/4 SPECIAL	1496	9001 OW	1934/36	Spl
229	2b		Williams (Christopher) C.A.	RILEY SPECIAL	1500	JV 285	1930/34	Spl
230	2b		Monro (Hamish) H.A.D.	RILEY 9 SPECIAL	1087	GS 1750	1929	Spl

## SPECTATOR SAFETY CODE

We hope that you will enjoy watching the vintage cars tackling the trials Hill Sections and ask that you follow the Spectator Safety Code that has been set out below:

- **PLEASE DO NOT WALK ON THE COMPETITIVE HILL SECTIONS WHEN A CAR IS TACKLING A HILL**
- **PLEASE ENSURE YOUNG CHILDREN ARE ALWAYS ACCOMPANIED BY AN ADULT WHO IS RESPONSIBLE FOR THEIR BEHAVIOUR**
- **DRESS APPROPRIATELY FOR ALL WEATHER CONDITIONS**
- **PLEASE TAKE LITTER HOME WITH YOU**
- **MARSHALS ARE THERE TO ENSURE THE EVENTS RUNS SAFELY – PLEASE FOLLOW THEIR INSTRUCTIONS**
- **PLEASE KEEP ALL DOGS UNDER CONTROL**
- **REMEMBER MOTOR SPORT CAN BE DANGEROUS – YOU ARE THERE AT YOUR OWN RISK**
- **NO DRONES ALLOWED**

To help the event run smoothly and safely the Marshals will blow a whistle to signal a car is ascending or descending the hill. When you hear a whistle please stand to the side.....this is for your own safety.



We hope you enjoyed watching the old cars climbing Drumhouse – part of our *Motoring Heritage*.

To find out more about the Vintage Sports-Car Club and our membership offers see [www.vsccl.co.uk](http://www.vsccl.co.uk)

### **The Club extends its thanks to:**

The Forestry Commission, Honister Slate Mine and other private landowners.

### **The Principal Associates of the Club:**

Bonhams, Hagerty, The Automobile and Kingfisher Brewery



