



The Cotswold Trial Weekend

Stanway, Gloucestershire
26th & 27th October 2024



Gillian Carr pilots Julian Ghosh's Vauxhall Super G to win the DHO Spirit of the Cotswold Trophy

Photo: Peter McFadyen

Programme
Donations welcome



THE VINTAGE SPORTS-CAR CLUB

The Cotswold & Cotswold Novice Trials

26th & 27th October 2024

Motorsport UK Permit Numbers – 200351 & 200352

SPECTATOR INFORMATION

Held under the General Regulations of Motorsport UK (incorporating the provisions of the International Sporting Code of the FIA) and the Supplementary Regulations

Welcome to the Vintage Sports-Car Club Cotswold Trial, and the second Cotswold Novice Trial. In a change of format to previous years we see the experienced trialists taking to the hills on Saturday before the novices have a day to themselves on the Sunday.

WHAT IS A CAR TRIAL?

In the early days of the motor car, trialling was the main form of motor sport in the United Kingdom. There was only one racing circuit in the country, Brooklands, and rallying had not started. These climbs up rocky, muddy hills were extremely popular in their day and as with all forms of motor sport helped in the development of the car.

A Car Trial is an untimed form of motor sport, where competitors attempt to climb a number of set routes up steep, rough and muddy hills. The route up each hill is known as a 'Section'. Each Competitor will receive a score between 0 and 25 for each Section depending on how far they travel up the hill. All the scores for each Section are combined at the end of the event, and the Competitor with the highest combined score wins.

Competitors must carry passengers, who are called 'Bouncers'. The role of the Bouncer is to navigate the driver between sections on the forest roads and public highway, and bounce within the confines of the car when they are on a Section. Bouncing can give the car more grip, thus helping it to travel further up the hill and score more points.

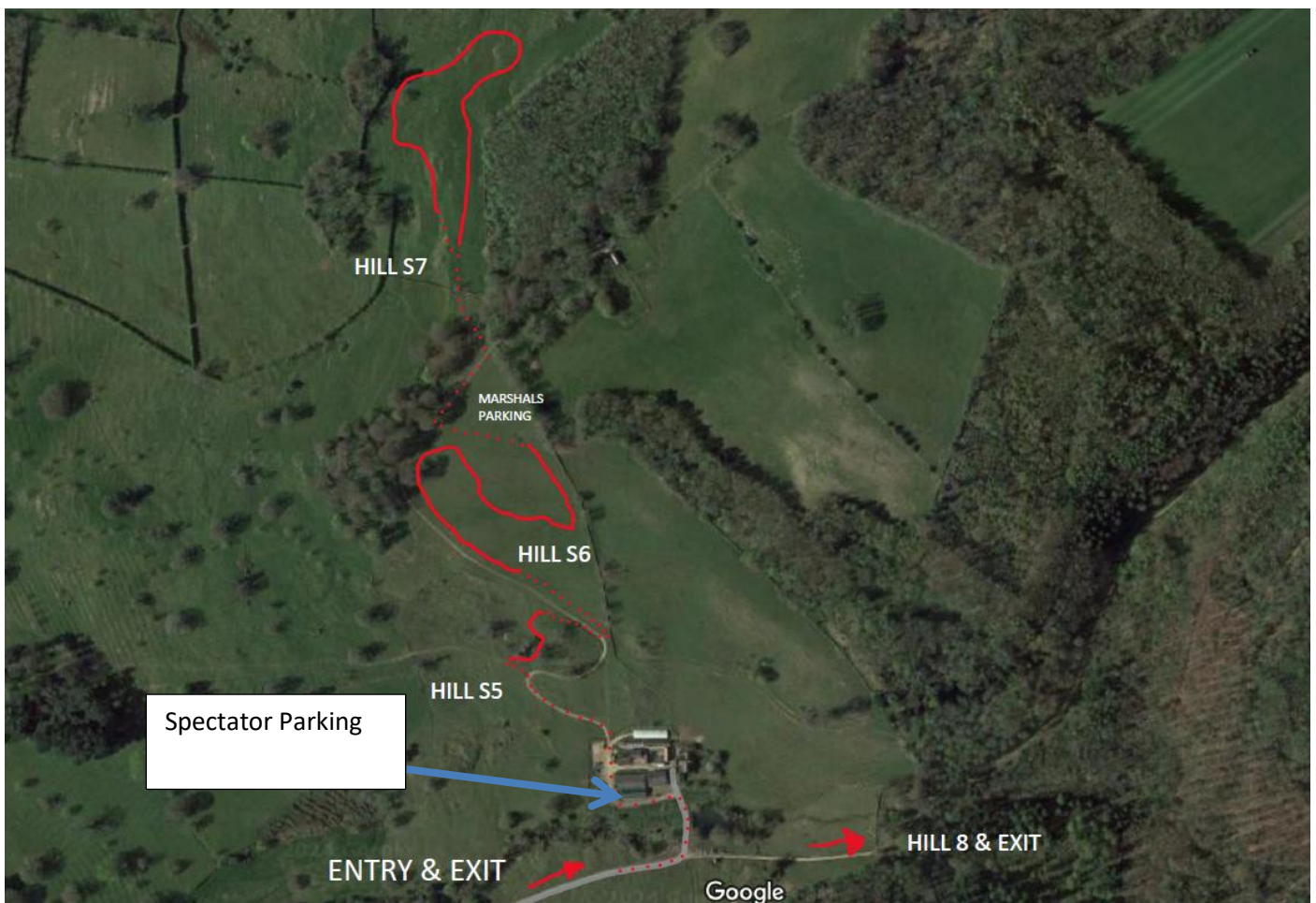
You will notice Marshals standing alongside the Sections. Marshals observe the score for each car, whether it hits a marker, and writes this onto the Competitors' Scorecard. The Marshals are also responsible for ensuring the event runs safely so please do as they ask. Trialling is a fun form of motor sport, very social and hugely successful within the VSCC. The Club runs a number of Car Trials each year throughout the UK.

Please keep all dogs on a lead

SPECTATOR HILL LOCATIONS

4 Hills are located at Papermill Farm for you to spectate and are listed below along with the map of the area.

Papermill Group Hills					
Hill 5	Papermill Chase	068 326		068 321	068 321
Hill 6	Robin's Hollow STOP & RESTART	071 325	Attempt after Hill 5	068 321	068 321
Hill 7	Lidcome Hill	070 329	Attempt after Hill 6	068 321	068 321
Hill 8	Lidcome Ash	074 323	Attempt after Hill 7, UNLESS START HILL GROUP EXIT	068 321	081 317



Cotswold Trial Saturday 26th October - Entry List

Class	No.	Driver	Car	ccS	Reg	Year	Elig. Class
1a	100	Johnson (David) D.A.	AUSTIN 7 CHUMMY	747	JU 7747	1928	Std
1a	101	Peacop (Alex) A.J.	MORRIS MINOR	848	SV 9217	1930	Std
1a	102	Beck (Nicholas) N.J.	AUSTIN 7 AD 'CHUMMY'	747	GU 6131	1929	Std
1a	103	Rowe (Richard) R.E.C.	AUSTIN SEVEN CHUMMY	747	UC 9741	1928	Std
1a	105	Miller (Archie) Mr A.C.M.	AUSTIN 7 CHUMMY	747	FJ 4663	1927	Std
1a	107	Lyon (Malcolm) M.M.	AUSTIN 7 CHUMMY TOURER	747	FL 7165	1928	Std
1a	108	Daniell (George) Mr G.	AUSTIN 7 CHUMMY	750	RU5002	1927	Std
1a	109	Holmes (Paul) P.	AUSTIN 7 CHUMMY	747	VF 3888	1928	Std
1a	110	King (Andy) A.R.	MG TA CREAM CRACKER	1292	ABL 964	1936	Std
1b	120	Longhurst (Philip) P.C.	AUSTIN 7 ULSTER REPLICA	747	PO 8143	1933	Mod
1b	121	Rolfe (David) D.R.	MG M TYPE	1087	VU 7908	1930	Spl
1b	122	Mycock (Kraig) K.T.	AUSTIN 7 ULSTER	858	SV 5698	1930	Mod
1b	123	Hughes (Noel) N.T.	AUSTIN 7 ULSTER	747	SV 7627	1930	Mod
1b	124	Fathers (Stephen) S.	AUSTIN ABBOT SPECIAL	747	GSJ 741	1929	Mod
1b	125	Gorst (Nick) N.W.	AUSTIN 7 GORDON ENGLAND	747	ER 8950	1928	Mod
1b	126	Owen (Sarah) S.	AUSTIN 7 ULSTER REPLICA	747	BF5908	1930	Mod
1b	128	Jeavons (Vienna) Miss V.F.	AUSTIN ULSTER	747	VL 8550	1932	Mod
1b	129	Henney (Mike) M.	AUSTIN 7	747	655 XUB	1935	Spl
1b	130	Walker (Hughie) H.	AUSTIN VAT 69	1200	YD 3815	1930	Spl
1b	131	Thornton (Tom) T.	G N PAPHILLION	5250	BF 9868	1922/28	Spl
1b	132	Bishop (Peter) P.W.D.	AUSTIN 7 CHUMMY	747	DH 9247	1928	Mod
1b	133	Hill (Susan) Miss S.M.	HELIX 2 SEAT OPEN	1496	HT 7145	1923/29	Spl
1b	134	Marsh (William) W.	AUSTIN 7	747	UL 4264	1930	Mod
1b	136	Bingham (Dennis) D.	AUSTIN 7 TOURER	747	BF4714	1930	Mod
1b	137	Cox (Oliver) O.	AUSTIN 7 ULSTER REPLICA	750	RP 5081	1927	Spl
1b	138	Gibson (Robert) R.T.	AUSTIN 2-SEATER SPORTS	747	WFX 435	1933	Spl
1b	139	Chatto (Derek) D.V.C.	MG M Type	847	MG 1930	1929/30	Mod
1b	140	Parkinson (Philip) P.	AUSTIN SEVEN AE TOURER	747	DR7354	1930	Std
1b	141	Lindsey (Clive) C.B.	AUSTIN 7	747	YB7482	1926	Spl
1b	142	Storer (Andy) A.R.	AUSTIN 7	770	OX 8346	1928	Spl
1b	143	Brown (Robert) R.H.	AMILCAR CGSS	2986	UY 4342	1926/30	Spl
1b	144	Williams (Rachael) Dr R.	AUSTIN 7	747	BF 5206	1930	Spl
1b	145	Tomlinson (Jane) Mrs M.J.	GODFREY AND PROCTOR SPORTS	803	SV 6199	1928	Mod
1b	146	Dutton (Ivan) I.J.	SALMSON VAL 3	1087	BF 9703	1923	Spl
1b	148	Graham (Gareth) G.J.	AUSTIN 7 ULSTER REPLICA	747	RAS 193	1930	Mod
1b	149	Moore (Matthew) M.R.	AUSTIN 7 CHUMMY	696	SV4474	1929	Std
1b	150	Knight (David) D.R.	AUSTIN 7 CHUMMY	747	USJ 648	1930	Mod
1b	151	Derrick (Richard) Mr R.B.	AUSTIN 7 CHUMMY	747	DS8713	1930	Mod
1b	152	Weatherall (Guy) R.C.G.	AUSTIN 7 CHUMMY	747	OT 9271	1928/30	Mod
1b	153	Hoskins (Harry) H.M.	AUSTIN 7 TOURER	747	GH 6536	1929/30	Mod
1b	154	Worrall (Mark) M.	AUSTIN 7 TOURER	747	PV2953	1936	Spl
1b	155	Gunn (Fergus) F.B.	AUSTIN 7 ULSTER	747	OD 7293	1929	Mod
1b	156	Jones (Adam) A.W.	AUSTIN 7 ULSTER	747	UY 8900	1930	Mod
1b	157	Bond (Jack) J.S.	AUSTIN 7 CHUMMY	747	VR 8046	1930	
1b	158	Houlgate (Richard) C.R.J.	AUSTIN 7	747	RX 2937	1930	Spl

1b	159	Tongue (Andrew) A.G.	AUSTIN 7 CHUMMY	747	SV 554	1930	Mod
1b	160	Blakeney-Edwards (James) J.	AUSTIN 7 CHUMMY	747	UE 2744	1927	Std
1b	161	Blakeney-Edwards (Patrick) P.B.	AUSTIN 7 ULSTER	747	GW 3381	1930	Mod
1b	162	Crisp (Jane) Mrs J.	AUSTIN 7 CHUMMY	749	UW 877	1929	Mod
1b	163	Isherwood (Andrew) A.	AUSTIN 7	750	SB3894	1930	Mod
1b	164	Francis (Ian) Mr I.W.F.	AUSTIN 7 ULSTER REPLICA	747	BF9643	1928/29	Mod
1b	165	Diffey (George) G.E.	HUMBUG 9/28 DOGCART	3300	KX 301	1928	Spl
1b	166	Ng (Yushan) Y.	AUSTIN SEVEN RK SALOON	747	VP3493	1928	Std
1b	167	Milne-Taylor (Alexandra) A.E.	AJS 2 SEATER SPORTS	1056	UK 9533	1930	Spl
1c	175	Price (Matt) M.E.	FORD MODEL A SPECIAL	3300	BF 8349	1930	Spl
1c	176	Ireland (Toby) T.W.	RILEY 9 SPECIAL	3300	Bf5806	1929	Spl
1c	177	Waite (Fred) F.	AUSTIN 7	747	BF 5883	1930	Spl
1c	178	Quilter (Martyn) M.	SINGER JUNIOR SPECIAL	1087	BF 7046	1930	Spl
1c	179	Skelton (Donald) D.	AUSTIN 7 SPORTS	750	WFO 423	1930	Spl
1c	180	Golightly (David) D.K.	FORD MODEL T	3300	BF 6461	1927	Spl
1c	181	Webb (Chris) C.I.	AUSTIN ULSTER REPLICA	747	VC 9452	1930	Mod
1c	184	Rich (Stewart) S.	AUSTIN 7	747	SV 6155	1930	Spl
1c	185	Harrison (Jolyon) J.L.	FORD A SPECIAL	3200	SL 9782	1930	Spl
1c	186	Owen (Geraint) G.W.	MORRIS JAP SPL JEMIMA	1100	EX 6880	1930	Spl
1c	187	Arkell (Stephen) S.	SINGER JUNIOR	848	VP 6379	1929/30	Spl
1c	188	Skelton (Sarah) Miss S.	AUSTIN 7 ULSTER (COPY)	747	AZ 6079	1930	Mod
1c	189	Price (Simon) S.E.	FORD MODEL A SPECIAL	3300	BF 4957	1930	Spl
1c	190	Batty (Peter) Mr P.J.	FORD T	3300	BF 7838	1929	Spl
2a	200	Smith (Jessica) Miss J.A.	FORD MODEL A PHAETON	3285	SV9510	1930	tba
2a	201	Perry (Charlotte) Miss C.	FORD Model A	3300	394 YUG	1931	tba
2a	202	Birkett (Matthew) M.R.	FORD MODEL A	3300	BF 7535	1929	Std
2a	203	McRobert (David) D.	FORD MODEL A PHAETON	3285	SV7861	1928	Std
2a	204	Crook (Christopher) C.R.A.	FORD MODEL A	3285	BF5664	1930	Std
2a	206	Smith (Rebecca) R.E.	FORD A TUDOR SEDAN	2005	BF 5405	1930	Std
2a	207	Harrold (Stephen) S.A.	FORD MODEL A	3300	RSY 916	1930	Std
2a	208	Hodgkinson (James) J.E.S.	FORD MODEL A	3300	DS 7898	1929	Mod
2a	209	de Chair (Ben) B.	FORD MODEL A	3300	TU 3460	1930	Std
2a	210	Roberts (Matthew) M.	FORD MODEL A	3300	BF 7642	1929	Std
2b	220	New (Michael) M.R.	MORRIS OXFORD SPECIAL	1802	BS9708	1928	Spl
2b	221	Ellison (David) D.J.	FORD MODEL A TUDOR	3285	SV 6900	1930	Mod
2b	222	Saxl (David) D.	RILEY 12/4 SPECIAL	1496	9001 OW	1934/36	Spl
2b	223	Williams (Christopher) C.A.	RILEY SPECIAL	1500	JV 285	1930/34	Spl
2b	224	Higgs (John) J.	MORRIS COWLEY	1802	TE 6974	1929	Spl
2b	225	Baxter (Mary) M.L.K.	CHRYSLER 75	4078	AGX 107	1928	Spl
2b	226	Garland (Elysia) E.M.T.	LEA-FRANCIS 12/40 2 STR	1496 S	EE 9190	1929	Spl
2b	227	Garland (Peter) P.J.	LEA-FRANCIS P Type	1496	VC 319	1929	Spl
2b	228	White (Joanne) Miss J.L.	RILEY 12/4 SPECIAL	1496	PSY 796	1933	Spl
2b	229	Hill (Stephen) S.	FORD MODEL A	3400	BF 5704	1928	Mod
2b	230	Monro (Hamish) H.A.D.	RILEY 9 SPECIAL	1087	GS 1750	1929	Spl
2b	232	Miller (Jonathan) J.P.C.	CHRYSLER 66 SPORTS	3582	FM 6024	1930	Mod
2b	233	Wright (Andrew) A.	CHRYSLER 75	4078	RU 9935	1929	Spl
2b	234	Beebee (Robert) R.T.	CHRYSLER B70 TOURER	3500	599 XUW	1925	
2b	235	Williams (Edward) E.P.	MORRIS MAJOR	1939	CSL 653	1930	Spl

2b	236	Stollery (Joseph) J.A.	RILEY 9 Mk3	3300	UL7459	1929/30	Spl
2b	237	Bowyer (Charlotte) Miss C.	FORD MODEL A	3300	DS 8920	1928	Spl
2b	238	Hennessy (Russell) R.J.	MORRIS COWLEY TOURER	1802	AX5184	1923	Spl
2b	240	Hodgkinson (Robert) R.J.S.	FORD MODEL A PHEATON	3400	SV 4088	1929	Mod
2b	241	Bowyer (Simon) S.I.	FORD MODEL A	3300	ANZ2917	1930	Spl
2b	242	Bond (David) D.J.	MORRIS COWLEY 2 STR	1550	RW 4974	1926	Mod
2b	243	Carr (Gillian) Miss G.M.	VAUXHALL SUPER G	4224	MM 4174	1924	Spl
2b	244	Collings (Archie) A.N.	BENTLEY 3/4 1/2 LITRE	4398	XY 29	1925	Spl

Class 1: Short wheelbase cars (less than 8' 6" & HRGs), cars with solid rear axles. Sub-divided as follows:

- 1a. Standard cars
- 1b. Clubmans
- 1c. Experts (As listed on VSCC web page VSCC Trials Experts)

Class 2: Long Wheelbase cars (8' 6" and over). ALL cars must have an operative differential. Sub-divided as follows:

- 2a. Standard cars
- 2b. Modified and Special cars

Cotswold Novice Trial Sunday 27th November - Entry List

Class	No.	Driver	Car	ccS	Reg	Year	Elig. Class
1a	100	Winter (Nicholas) N.P.	AUSTIN 7 SALOON	747	DG 8678	1934	Std
1a	101	Cameron-Eveleigh (Hamish) H.	AUSTIN 7 CHUMMY	750	RU5002	1927	Std
1a	102	Baker (Paul) P.R.	AUSTIN SEVEN CHUMMY	747	OX 8006	1928	Std
1a	103	Jordan (Alex) A.N.F.	AUSTIN 7	750	SV 8688	1928	
1a	104	Fox-Edwards (Harry) H.F.E.	PEUGEOT 190S Torpedo	695	ch. 9564	1930	tba
1a	105	Patton (Laurie) Mr L.R.P.	AUSTIN 7 CHUMMY	747	MT 2872	1929	Std
1a	106	Yates (Douglas) D.	AUSTIN 7 CHUMMY	747	VF 3888	1928	Std
1a	107	Carlton-Walker (Rachael) Miss R.T.	AUSTIN 7 ULSTER REPLICA	750	RT 7470	1930	
1a	108	Cracraft-Eley (William) Mr C.W.A.	AUSTIN 7 CHUMMY	747	MT 1724	1929	tba
1a	109	Oliver (Adam) Mr A.M.	AUSTIN 7 CHUMMY	750	WL4602	1928	Std
1a	110	Beck (Robert) R.J.	AUSTIN 7 AD 'CHUMMY'	747	GU 6131	1929	Std
1a	111	Ralphs (Adrienne) Mrs A.J.	AUSTIN 7 CHUMMY	747	YC 8194	1930	Std
1a	112	Robertson (Ian)	TRIUMPH 1934 Southern Cross	1087	RV 5287	1934	Std
1a	113	Herbert (Joseph) J.G.M.	AUSTIN 7 CHUMMY TOURER	747	FL 7165	1928	Std
1a	114	Kent (Steven) S.C.	MORRIS MINOR OHC	847	MM 9385	1929	Std
1a	115	Stanbury (Seth) Mr	AUSTIN 7 CHUMMY	747	FJ 4663	1927	Std
1b	120	Loughran Smith (Gerard)	AUSTIN 7 SPECIAL	747	FSV508	1933	Spl
1b	121	Quilter (Rosemary) Mrs R.	SINGER JUNIOR	1087	BF7046	1930	tba
1b	122	Peppiatt (Tom) T.	AUSTIN 7 SPECIAL	749	BFD 240	1936	
1b	123	Duffin (Zoe) Miss Z.K.	AUSTIN 7 ULSTER	750	PP 7965	1930	Spl
1b	124	Heeks (Imogen)	AUSTIN 7 TOURER	747	GH 6536	1929/30	Mod
1b	126	Howe-Davies (Andrew) A.A.	AUSTIN 7 SPECIAL	747	UXS 856	1933	Spl
1b	127	Rose (Madeleine) M.E.	AUSTIN 7 ULSTER REPLICA	747	BF5908	1930	Mod
1b	129	Mason (Evie) Ms E.	AUSTIN 7	747	UL 4264	1930	Mod
1b	130	Ward (Isabel) Miss I.M.	AUSTIN 7 CHUMMY	747	USJ 648	1930	Mod
1b	131	Pearson (Daniel) D.M.	AUSTIN 7 ULSTER REPLICA	747	BF5908	1930	Mod

1b	132	Brown (Tania) Miss T.M.	AUSTIN 7 ULSTER	747	UY 8900	1930	Mod
1b	133	Fox (Ian) Mr A.	AUSTIN 7 TOURER	747	BF4714	1930	Mod
1b	134	Ireland (Elliot) Mr	RILEY 9 SPECIAL	3300	Bf5806	1929	Spl
1b	135	Gorst (Annabel)	AUSTIN 7 GORDON ENGLAND	747	ER 8950	1928	Mod
1b	136	Lees (Michael) M.D.	AUSTIN 7 CHUMMY	747	LG6503	1930	Mod
1b	137	Caldicott (Sarah (Sally)) Miss	RILEY 9	1089	WL 9117	1930	Spl
1b	138	Blakeney-Edwards (Scarlett) Ms S.	AUSTIN 7 ULSTER	750	EW 6429	1930	Mod
1b	139	Owen (Mark) M.A.	BENJAMIN P2	1098	BF 9631	1924	Spl
1b	140	Gerwat (Arabella) Miss A.V.G.	AUSTIN 7 SPECIAL	750	BS9227	1929	
1b	141	Grimshaw (Lucy) Ms L.	AUSTIN 7 CHUMMY	747	VR 8046	1930	
1b	142	McWilliam (Agnes) Miss A.	AUSTIN 7 ULSTER REPLICA	747	YSJ 217	1932/34	Spl
1b	143	Gabbatiss (Pete) P.	AJS 9HP	1018	SV 8249	1929	tba
1b	144	Owen (Freddie) Mr F.J.	MORRIS JAP SPL JEMIMA	1100	EX 6880	1930	Spl
1b	145	Rutland-Tucker (Elliot) E.R.T.	AUSTIN 7 ULSTER REPLICA	747	GF 2638	1930	Mod
1b	146	Garton (Charlotte) Miss	AUSTIN 7 SPECIAL	750	JO 9336	1934	Spl
1b	147	Righton (Lucy) Ms L.	AUSTIN ULSTER	747	VL 8550	1932	Mod
1b	148	Hammond (Richard) Mr R.	AUSTIN 7 CHUMMY	747	UE 2744	1927	Std
2a	200	Garness (Roger) R.L.G.	FORD MODEL A PHAETON	3285	347YUM	1928	Std
2a	201	Cartwright (Mara) Ms S.	RILEY MONACO	1100	UR 9633	1930	Std
2a	202	Dowle (Simon) S.	FORD MODEL A	3300	394 aug	1930/31	
2a	203	Wiseman (Lucy Rose) Ms L.R.	FORD MODEL A	3300	NRV505H	1930	Std
1b	204	Harvey (Rebecca) Ms R.	FORD T	3300	BF 7838	1929	Spl
2a	205	Whitmore (Nick) N.C.	FORD MODEL A	3300	DS 9806	1930	tba
2a	206	Carvell-Crook (Isobel) Miss I.R.	FORD MODEL A	3285	BF5664	1930	Std
2a	207	Hawkes (Maxwell) Mr	FORD MODEL A PHAETON	3286	BF 6272A	1928	tba
2a	208	Scudamore (George) G.L.S.	FORD MODEL A PHAETON	3285	SV9510	1930	tba
2b	210	Carvell-Crook (Rhiannon) Mrs R.	FORD MODEL A TUDOR	3285	SV 6900	1930	Mod
2b	211	Glover (Kate) K.J.	ALVIS 12/50 DUCKSBACK	3300	DSV 768	1930	Spl
2b	212	Bond (Jane) Mrs J.	MORRIS COWLEY 2 STR	1550	RW 4974	1926	Mod
2b	213	Chilton (David) D.	FORD MODEL A PHEATON	3400	SV 4088	1929	Mod
2b	214	Cook (Mia) Ms M.	MORRIS COWLEY TOURER	1802	AX5184	1923	Spl
2b	215	Cawley (Wilfred) W.A.F.	FORD MODEL A	3300	IA 7667	1928	Mod
2b	216	Mills (Jason) J.	FORD MODEL A PHAETON	3300	IG4332	1930	Mod
2b	217	Hore (Ivan) I.W.G.	RILEY 12/4 SPECIAL	1496	9001 OW	1934/36	Spl
2b	218	Fack (Jerome) W.J.	FORD MODEL A	3300	BF6906	1928	tba
2b	219	Watkinson (Paul)	FORD MODEL A	3300	DS 7898	1929	Mod
2b	220	Johnson (Gus) Mr	LEA-FRANCIS 12/40 2 STR	1496 S	EE 9190	1929	Spl

Class 1: Short wheelbase cars (less than 8' 6" & HRGs), cars with solid rear axles. Sub-divided as follows:

- 1a. Standard cars
- 1b. Modified and Special Cars

Class 2: Long Wheelbase cars (8' 6" and over). ALL cars must have an operative differential. Sub-divided as follows:

- 2a. Standard cars
- 2b. Modified and Special cars

**Why not join the VSCC and get involved?
Visit www.vsc.co.uk for further details**

SPECTATOR SAFETY CODE

We hope that you will enjoy watching the vintage cars tackling the trials sections and ask that you follow the Spectator Safety Code that has been set out below.

- Please ensure you stay within the specific areas marked out for Spectators
- Please DO NOT walk on the competitive sections
- Please keep all dogs on a lead
- Please ensure children are ALWAYS accompanied by an adult who is responsible for their behavior
- Please ensure you dress appropriately for all weather conditions
- Please take your litter home with you
- Marshals are there to help you and ensure the event runs safely – please follow their instructions
- Motorsport can be dangerous. Despite the organisers taking all reasonable precautions unavoidable accidents can happen. In respect of these you are present at your own risk

